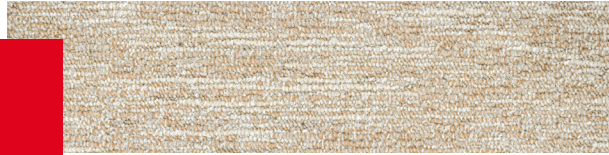


CATIFA®

creative
carpet tiles



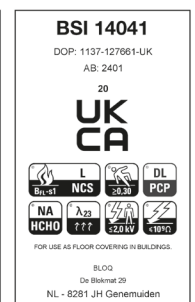
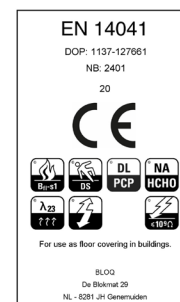
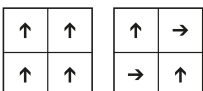
COLECCION AMSTERDAM

SPECIFICATIONS

TYPE OF MANUFACTURE	Tufted Patterned Loop Pile 1/10"
ISO 2424	
PILE FIBER COMPOSITION	100% Polyamide 6
ISO 2424	Solution Dyed Nylon made by Aquafil
SECONDARY BACKING	Bitback, Modified Bitumen
ISO 2424	70% Recycled Content
DIMENSION	25 x 100 cm
EN ISO 24342	
PILE WEIGHT	650 g/m ²
ISO 8543	
SURFACE PILE WEIGHT	380 g/m ²
ISO 8543	
TOTAL WEIGHT	4 400 g/m ²
ISO 8543	
TOTAL THICKNESS	6.9 mm
ISO 1765	
PILE HEIGHT	3.8 mm
ISO 1766	
PILE DENSITY	0.100 g/m ³
ISO 8543	
NUMBER OF TUFTS	152 000 /m ²
ISO 1763	
DIMENSIONAL STABILITY	≤ 0.2%
ISO 2551	
NUMBER OF COLOURS	18
PACKAGING	Box: 10 tiles / 2,5 m ² Pallet: 200 m ²

PERFORMANCE

CLASSIFICATION	33
EN 1307	
LUXURY RATING	LC1
EN 1307	
CASTOR CHAIR RATING	A: Intensive use
EN 985	
FIRE CLASSIFICATION	B _{fl} -s1
EN 13501-1	
IMPACT SOUND INSULATION	ΔL _w : 26 dB
EN ISO 10140-3	
SOUND ABSORPTION	Frequency Hz 125 250 500 1000 2000 4000
EN ISO 354	a _s 0.01 0.03 0.09 0.21 0.35 0.40
NOISE REDUCTION	a _w : 0.20
EN ISO 354	
PERMANENT ANTISTATIC	≤ 2 kV
ISO 6356	
TRANSVERSAL RESISTANCE	≤ 1 X 10 ⁹ Ohm
ISO 10965	
THERMAL RESISTANCE	0.080 m ² K/W
ISO 8302	
COLOUR FASTNESS TO LIGHT	≥ 7
EN ISO 105-B02	
COLOUR FASTNESS TO WATER	≥ 4
EN ISO 105-E01	
RUBBING FASTNESS	≥ 4
EN ISO 105-X12	
GUT N° PRODIS	6DFDDB9E



02/06/2022

All rights reserved to alter technical specifications.